



THE POWER OF TRIPLE PROTECTION

NO MILK PROTEIN ALLERGIES

Remin Pro

TRIPLE-PROTECTIVE DENTAL CARE WITH FLUORIDE, NANO-HYDROXYAPATITE (CALCIUM AND PHOSPHATE) AND XYLITOL



Remin Pro

THREE PROVEN COMPONENTS IN ONE PASTE

Remin Pro combines three components for effective protection against demineralization and erosion: hydroxyapatite, fluoride and xylitol. Remin Pro thus represents an optimal addition to the services offered by you.

Nano-hydroxyapatite (calcium and phosphate)

Natural tooth substance consists largely of hydroxyapatite (calcium and phosphate). The nano-hydroxyapatite contained in Remin Pro fills superficial enamel lesions and the tiniest irregularities that arise from erosion.

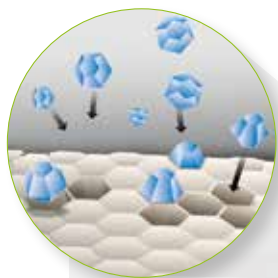
Remin Pro adheres to the tooth substance and protects the tooth against demineralization and erosion. The surface is noticeably smoothed and dentin tubules are superficially sealed. Furthermore, the smooth surface impairs the adhesion of bacterial plaque.

Fluoride

Fluoride is the proven agent for caries prophylaxis. On the tooth surface, fluoride is converted into the more stable and more acid-resistant fluorapatite through contact with saliva. The fluoride (1,450 ppm fluoride) contained in Remin Pro strengthens the tooth and thus makes it more resistant to acid attacks.

Xylitol

The sugar substitute Xylitol is known for its cariostatic properties. Xylitol (unlike saccharin, for example) cannot be converted into harmful lactic acid by cariogenic bacteria. Thus the harmful effects of these bacteria and the metabolic product lactic acid can be significantly reduced by the action of Xylitol, allowing the mouth to naturally remineralize damaged teeth with less interruption.



Nano-hydroxyapatite – fills superficial enamel lesions



Fluoride – open dentin tubules are sealed



Xylitol – bacteriostatic effect of xylitol



Remin Pro

RECUPERATION FOR THE TEETH

With Remin Pro, the tooth is strengthened and desensitization of the tooth substance is promoted. The paste, which is available in melon, mint and strawberry flavors, is water-based. Remin Pro thus not only has a pleasant flavor, but also creates a pleasing feeling in the mouth. Remin Pro – recuperation for the teeth.

Stimulation of salivation

Remin Pro is available in mint, melon and strawberry flavors. Xylitol in Remin Pro stimulates salivation. Natural remineralization is thus promoted and the acidic environment is neutralized.

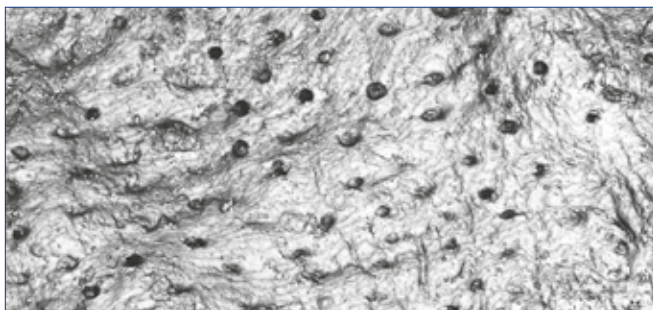
Remin Pro after professional tooth cleaning

Professional cleaning and the subsequent fluoridation are an integral part of lasting caries prophylaxis. Remin Pro can be used to complete the preceding prophylaxis treatment, and it immediately provides a noticeable pleasant feeling in the patient's mouth.

Remin Pro before whitening

For extremely hypersensitive patients, Remin Pro can be used weeks before the whitening treatment to make the patient experience more comfortable and agreeable.

Visibly smooth surfaces and sealed dentin tubules



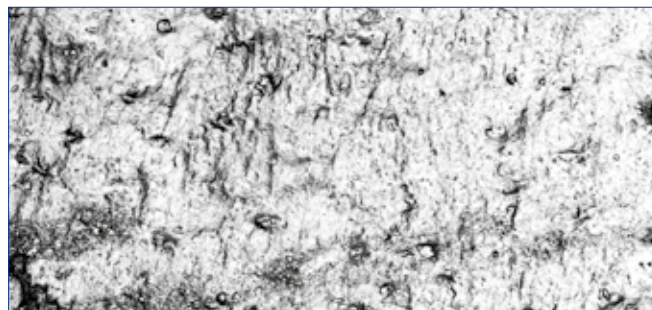
Scanning electron microscope image of dentin following acid attack

Remin Pro after whitening

Hypersensitivities are a familiar problem in the field of tooth whitening, both in the office and at home. These can be caused by open dentin tubules, but they can also be the result of dehydration. After treatment, Remin Pro is the ideal product within the treatment chain to restore the water balance in the tooth.

Remin Pro for smooth surfaces

The smoothing and tooth substance filling effect of Remin Pro is visible on these SEM micrographs. Cervical dentin after an acid attack from orange juice can be seen as an example in the first image. The second image shows the result of a single treatment with Remin Pro. The dentin tubules are largely sealed and the surface is visibly smoothed.



Scanning electron microscope image of root dentin treated with Remin Pro. The surface is noticeably smoother, the tubules of the dentin are closed.

Remin Pro

THE BENEFITS OF NANO-HYDROXYAPATITE ARE NOT NEW

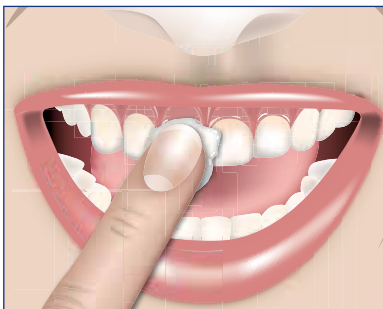
Studies on the results of nano-hydroxyapatite introduction to tooth structure, span the course of many, many years, with results supporting nano-hydroxyapatite's quite useful impact in smoothing the tooth surface and its beneficial reduction of caries. Below is the abstract from one of those studies:

In a March 2004 study by Kawamata, etal¹ the study showed that hydroxyapatite suspensions lead to smoother tooth surfaces and reduced bacterial plaque formation. In the study freshly extracted human teeth were flat polished and treated with 3 polishing pastes, followed by remineralization with

hydroxyapatite containing tooth cream. Upon examination of the surface by SEM (scanning electron microscope) it was discovered that the tooth surfaces were much smoother and there was a reduction in the colonization of bacteria which was attributed to the introduction of hydroxyapatite.

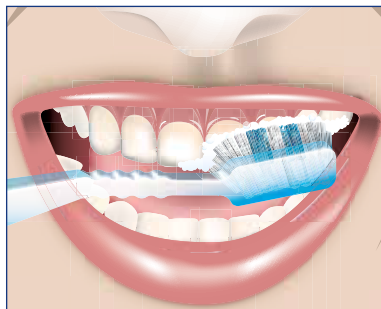
¹ Nishio M, Kawamata H, Fujita K, Ishizaki T, Hayman R, Ikemi T: A new enamel restoring agent for use after PMTC. Poster presentation 82nd General Session & Exhibition of the IADR / March 2004.

How to apply Remin Pro



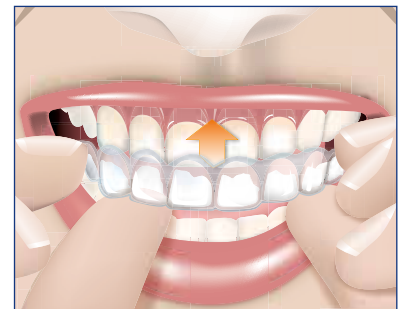
Applying Remin Pro with Your Finger or Cotton Swab

Apply a pea sized portion using your finger or cotton swab making sure to cover all tooth surfaces. Expel any leftover material. Remin Pro should remain in the mouth for 3 minutes, uninterrupted.



Applying Remin Pro with Your Toothbrush

Apply a pea sized portion to a soft toothbrush and lightly brush across all tooth surfaces. Expel any leftover material. Remin Pro should stay in the mouth for 3 minutes, uninterrupted.



Applying Remin Pro in a Custom Tray

Apply Remin Pro in a custom tray as directed by your dental professional.



Editors' Choice
THE DENTAL ADVISOR
www.dentaladvisor.com

RATINGS:
Excellent + + + + +
Very Good + + + +
Good + + +

Remin Pro

VOCO

(888) 658-2584
vocoamerica.com

Description

Remin Pro is a water-based cream containing hydroxyapatite (calcium and phosphate), fluoride (1450 ppm) and xylitol. It is indicated for use after whitening and prophylaxis for the treatment and prevention of hypersensitivity, demineralization and acid erosion. **Remin Pro** is formulated to provide added protection for teeth by neutralizing acid challenges from cariogenic bacteria in plaque. **Remin Pro** may be applied with a brush, with a finger or placed in a custom tray. It is available in strawberry, melon, and mint flavors in assorted and single-flavor packages. Each tube contains 40 g of paste. **Remin Pro** was evaluated by 24 consultants to treat sensitivity and demineralization. This desensitizing agent received a 96% clinical rating.

Suggested Retail Cost
\$162.95/12 tubes, \$46.50/3 tubes assorted

Product Features

Remin Pro is effective at reducing root surface sensitivity in a short time. The cream is smooth and spreads easily and flavors are pleasant. The inclusion of fluoride makes it ideal for caries prevention in high-risk patients. Unlike some other remineralizing agents, **Remin Pro** does not contain milk proteins, alleviating concerns in individuals who are sensitive to those ingredients. The instructions included with the cream are more appropriate for the dentist than for a patient. Consultants would like the addition of concise patient instructions.



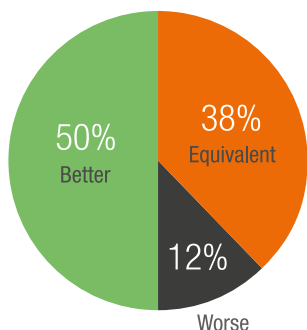
Consultants' Comments

- "Place it in whitening trays for easy and mess-free delivery."
- "Patients all reported a significant decrease in sensitivity."
- "Good flavors."
- "Works great in a whitening-type tray."
- "Add patient instructions to kit."
- "Instructions should indicate recommended frequency of use."

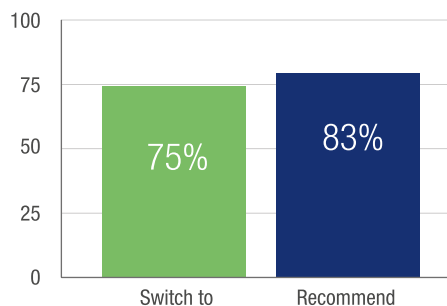
Clinical Tips

- Use a pea-sized amount and allow it to remain on the teeth for at least three minutes.
- Excess cream should be spit out to avoid swallowing excessive fluoride.
- Avoid rinsing, eating or drinking for 30 minutes or more after use.

Remin Pro compared to other remineralizing agents



Percentage of consultants who would:



Remin Pro

THE TRIPLE PROTECTION

Remin Pro has the power of triple protection, making it the ideal paste for continued dental health maintenance. Remin Pro can be easily applied with a toothbrush after oral hygiene, with a finger or an individual splint. Remin Pro's three natural tasting flavors have continued to be a good fit for patients!



| | | Calcium Phosphate | Fluoride | Milk Protein Allergy Risk |
|-----------------------|------|----------------------------------|-----------|---------------------------|
| MI Paste™ | GC | YES (Recaldent™) | NO | YES |
| MI Paste Plus™ | GC | YES (Recaldent™) | 900 ppm | YES |
| Remin Pro | VOCO | YES (Nano-Hydroxyapatite) | 1,450 ppm | NO |

Indications

- After whitening
- After professional cleaning
- Prevention and control of hypersensitivities

Advantages

- Triple protection of fluoride, nano-hydroxyapatite (calcium and phosphate) and Xylitol
- Nano-hydroxyapatite restores the mineral balance
- 61 % more fluoride (1,450 ppm) than leading brand

- Contains Xylitol which has cariostatic properties
- No risk of milk protein allergies as with other brands
- Fast acting and great tasting
- Easy to apply with finger, soft toothbrush or in a custom tray
- CDT Insurance Code D9910 can be used as an application of desensitizing medicament²

²Patti DiGangi RDH, BS Current Dental Terminology© 2014 American Dental Association. All rights reserved.

Presentation

| | |
|----------|--|
| REF 2003 | 12 × 40 g tube melon |
| REF 2004 | 12 × 40 g tube mint |
| REF 2005 | 12 × 40 g tube strawberry |
| REF 2006 | 12 × 40 g tube (4 each: melon, mint, strawberry) |
| REF 2007 | 3 × 40 g tube (1 each: melon, mint, strawberry) |



VOCO America Inc.
1245 Rosemont Drive
Suite 140
Indian Land · SC 29707
www.vocoamerica.com
infousa@voco.com

Toll-free phone: 1-888-658-2584
Fax: 1-888-849-3989



VOCO
THE DENTALISTS